

8 7 6 5 4 3 2 1

NOTES: UNLESS OTHERWISE SPECIFIED.

1. ASSEMBLE PER QUINTON WORKMANSHIP STANDARDS AND PROCEDURES.
2. PRESS BUSHING (ITEM 21) INTO SUPPORT (ITEM 22) FLUSH ±.030.
3. LUBRICATE BUSHING (ITEM 21) WITH GREASE (ITEM 113) PRIOR TO ATTACHING GRADE WELDMENT.
4. ALIGN FLYWHEEL ASSEMBLY (ITEM 13 OR 14) WITH POLY-V-PULLEY (PART OF ITEM 56 OR 57) WITHIN ±.020.
5. ORIENT MOTOR MOUNT (ITEM 18) WITH PROPER NOMENCLATURE FACING TO THE FRONT OF THE TREADMILL. CLUBTRACK: -001 THRU -006, MEDTRACK: -007 THRU -009.
6. ALTERNATE TENSIONING OF BOTH SCREWS (ITEM 81) UNTIL SPLIT LOCK WASHER (ITEM 95) IS FLAT.
7. DELETED.
8. CABLE TIES USED ON ALL CABLE MOUNTS (ITEM 75) AND AS NEEDED ON WIRE BUNDLES.
9. CONNECT WIRE HARNESSSES PER WIRING SCHEMATIC ON SHEET 9.
10. LUBRICATE BUSHINGS (ITEMS 26) WITH GREASE (ITEM 113) PRIOR TO INSTALLING ACTUATOR (ITEM 8 OR 9).
11. APPLY LOCTITE 242 (ITEM 122) TO THREADS PRIOR TO INSTALLING.
12. THESE ITEMS TO BE REMOVED AND PACKAGED SEPARATELY IN BAG PROVIDED FOR USE IN SHIPPING KIT AT FINAL ASSEMBLY: (ITEM 103) FLAT WASHER, QTY: 8 (ITEM 115) SCREW, HEX CAP, QTY: 8 (ITEM 116) LOCK WASHER, QTY: 8
13. TRUNION KIT IS LISTED FOR COST ONLY. IT IS PART OF ACTUATOR (ITEM 8 OR 9).
14. DELETED.
15. INSTALL HANDRAIL (ITEM 59) WITH CABLE ROUTED TO CONTROLLER ON LEFT HAND SIDE.
16. P/N 036118-001 IS AN ACCEPTABLE ALTERNATE. WHEN USING 036118-001, ITEMS 134 AND 135 NOT REQUIRED.
17. P/N 040049-001 IS AN ACCEPTABLE ALTERNATE.
18. WIPE END CAPS (ITEMS 39 AND 40) AND BOTTOM OF ENDCAP COVERS (ITEMS 141 AND 142) WITH ALCOHOL AND ALLOW TO DRY. THEN APPLY 3 STRIPS OF VHB TAPE (ITEM 143) TO ENDCAP COVERS, APPROXIMATELY AS SHOWN IN DETAIL 'S', AND PRESS ENDCAPCOVER IN PLACE.

Digitally signed by CATHEY CLARK
 cn=CATHEY.CLARK
 o=STAIRMASTER, c=US
 Date: 2003.02.18 10:56:24 -06'00'
 Reason: Document is released

REVISIONS				
LTR	ZONE	DESCRIPTION	APPROVED	DATE
		RDA: 10251	P. CDYAS	5/1/02
W		REVISED NOTE 18 ITEM 143 WAS QTY 4 REVISE DETAIL 'S'		
		ACTION CODE: J1 THREE STRIPS OF TAPE HAVE BEEN USED ON THIS ASSY SINCE INITIAL PRODUCTION. DOCUMENT UPDATE ONLY. MOD: DATE OF RELEASE		
X		REVISED PER ECO # 8475	K. FITE	1/27/03

1	1	1	1	1	1	12	032784-001	ROTARY TENSIONER			
1	1	1	1	1	1	11	032783-003	DRIVE MOTOR ASSEMBLY			
1	1	1	1	1	1	10	035730-001	GRADE WELDMENT			
1	1	-	1	-	-	9	035853-002	LINEAR ACTUATOR	220V		
-	-	1	-	-	-	8	035853-001	LINEAR ACTUATOR	115V		
1	1	1	1	1	1	7	035620-002	HEADFRAME, SHEET METAL			
-	-	-	-	-	-	6	035960-008	PLATE ASSY., CONFIGURATION	612, 230V, 80VA		
-	1	-	-	-	-	5	035960-005	PLATE ASSY., CONFIGURATION	612 DOMESTIC, 220V		
-	-	-	-	-	-	4	035960-004	PLATE ASSY., CONFIGURATION	612 DOMESTIC, 115V		
-	-	-	-	-	-	3	035960-007	PLATE ASSY., CONFIGURATION	510, 230V, 80VA		
-	-	-	-	1	-	2	035960-002	PLATE ASSY., CONFIGURATION	510 DOMESTIC, 220V		
-	-	-	-	-	-	1	035960-001	PLATE ASSY., CONFIGURATION	510 DOMESTIC, 115V		
-	-	-	-	-	-	-	-009	DELETED			
-	-	-	-	-	-	-	-008	DELETED			
-	-	-	-	-	-	-	-007	DELETED			
-	-	-	-	-	-	-	-006	MECHANICAL ASSEMBLY, CLUB/MEDTRACK	612 230V INTERNATIONAL		
-	-	-	-	-	-	-	-005	MECHANICAL ASSEMBLY, CLUB/MEDTRACK	612 220V DOMESTIC		
-	-	-	-	-	-	-	-004	MECHANICAL ASSEMBLY, CLUB/MEDTRACK	612 115V DOMESTIC		
-	-	-	-	-	-	-	-003	MECHANICAL ASSEMBLY, CLUB/MEDTRACK	510 230V INTERNATIONAL		
-	-	-	-	-	-	-	-002	MECHANICAL ASSEMBLY, CLUB/MEDTRACK	510 220V DOMESTIC		
-	-	-	-	-	-	-	-001	MECHANICAL ASSEMBLY, CLUB/MEDTRACK	510 115V DOMESTIC		

-009	000465	000465
-008	000459	000459
-007		
-006	000457	000504
-005	000456	000502
-004		000457
		000456
-003	000448	000503
-002	000458	000501
-001		000448
		000458
PART NO.	NEXT ASSY NO.	END ITEM NO.
APPLICATION		

PRODUCTION
DRAWING RELEASE STATUS

QTY PER ASSEMBLY		DO NOT SCALE DRAWING		PARTS LIST	
TOL	.XX ± 0.1 .XXX ± 0.01 .XXX ± 0.001	ANGLE	BENT ± 2° MACHINED ± 0.1°	DRAWN	S. ERICKSON 2/9/99
UNLESS OTHERWISE SPECIFIED ALL DIMENSIONS ARE IN INCHES DIMENSIONS AND TOLERANCES PER ANSI Y14.5-1982				ENGR	S. ERICKSON 2/9/99
CONFIDENTIAL & PROPRIETARY				MFG	D. CRAIN 2/9/99
THIS DOCUMENT IS THE PROPERTY OF STAIRMASTER SPORTS/MEDICAL PRODUCTS, INC. IT MAY NOT BE REPRODUCED IN WHOLE OR IN PART, PROVIDED TO THIRD PARTIES, OR USED FOR ANY PURPOSE OTHER THAN THE PERFORMANCE OF WORK FOR STAIRMASTER, WITHOUT WRITTEN AUTHORIZATION. ALL RIGHTS ARE RESERVED INCLUDING COPYRIGHTS.				QUAL	D. VANDEVENTER 2/9/99
				COMPL	-----
				MKTG	-----
				TECH SVCS	-----
SIZE	D	MODEL	510/612	DWG NO.	035602
SCALE	1/4	SOURCE	PRD	REV	X

DFORMATS-A SHIT 8 7 6 5 4 3 2 1

8 | 7 | 6 | 5 | 4 | 3 | 2 | 1

D

D

C

C

B

DWG NO. 035602
SHEET 4 OF 9

A

A

8	8	8	8	8	8	145	22027	WASHER, SPLIT LOCK	1/4"		
2	2	2	2	2	2	144	036092-005	WASHER, FLAT	M6, BLACK OXIDE		
6	6	6	6	6	6	143	036442-002	ADHESIVE TAPE, DBL COATED	VHB, 1.00" x 3.00"		
1	1	1	1	1	1	142	040037-002	COVER, ENDCAP	RIGHT		
1	1	1	1	1	1	141	040037-001	COVER, ENDCAP	LEFT		
4	4	4	4	4	4	140	040028-004	GUIDE, WIRE	1.00 HIGH		
6	6	6	6	6	6	139	040028-002	GUIDE, WIRE	0.75 HIGH		
1	1	1	1	1	1	138	040010-001	WELDMENT, BRKT, UPRIGHT MNT			
1	1	1	1	1	1	137	040007-002	BRACE, SIDERAIL, R.H.			
1	1	1	1	1	1	136	040007-001	BRACE, SIDERAIL, L.H.			
006	005	004	003	002	001						
						ITERATION NUMBER	PART NUMBER	DESCRIPTION	MATERIAL SPECIFICATION	REFERENCE DESIGNATION	

PRODUCTION		CONFIDENTIAL & PROPRIETARY			SIZE	MODEL	DWG NO.	REV
DRAWING RELEASE STATUS		THIS DOCUMENT IS THE PROPERTY OF STAIRMASTER SPORTS/MEDICAL PRODUCTS, INC. IT MAY NOT BE REPRODUCED IN WHOLE OR IN PART, PROVIDED TO THIRD PARTIES, OR USED FOR ANY PURPOSE OTHER THAN THE PERFORMANCE OF WORK FOR STAIRMASTER, WITHOUT WRITTEN AUTHORIZATION. ALL RIGHTS ARE RESERVED INCLUDING COPYRIGHTS.			D	510/612	035602	X
		SCALE	SOURCE	PRO	SHEET 4 OF 9			

DFORMATS-A SHT2

8

7

6

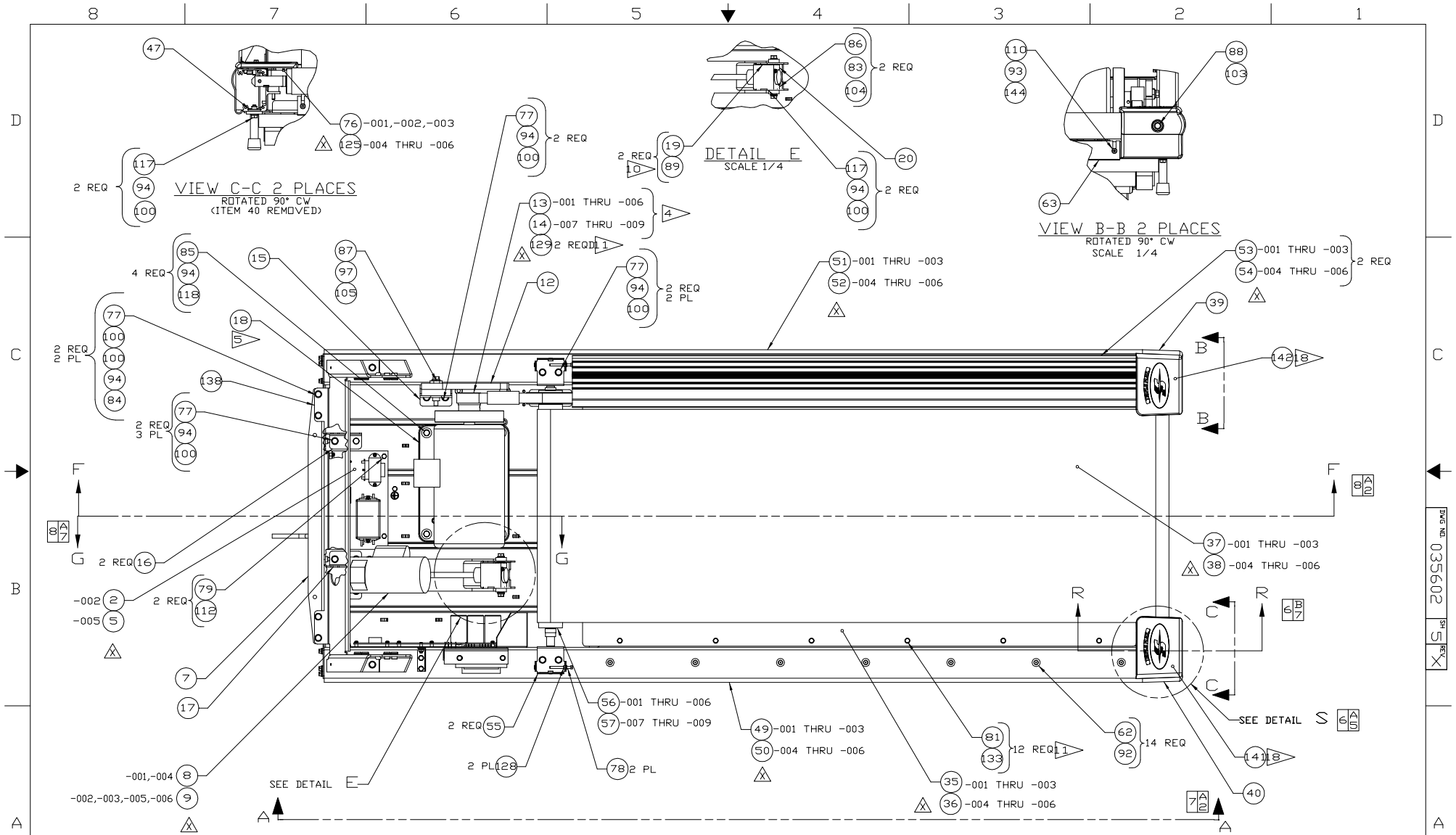
5

4

3

2

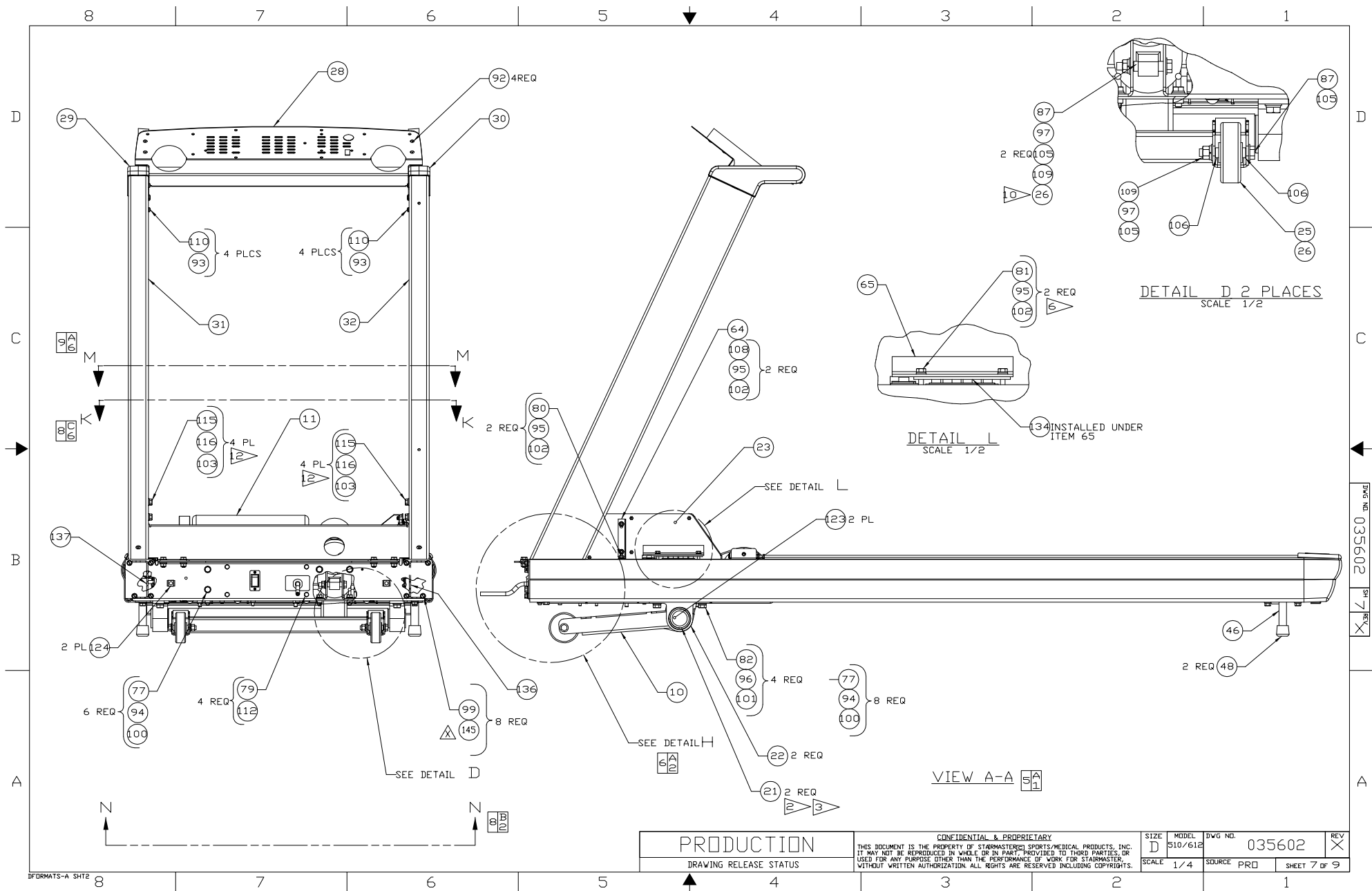
1



-001 SHOWN
 -002 THRU -009 SIMILAR EXCEPT AS NOTED
 UPRIGHTS (ITEMS 31 AND 32) AND ATTACHED PARTS REMOVED
 WIRING DETAILS NOT SHOWN

PRODUCTION		<small>CONFIDENTIAL & PROPRIETARY THIS DOCUMENT IS THE PROPERTY OF STAIRMASTER SPORTS-MEDICAL PRODUCTS, INC. IT MAY NOT BE REPRODUCED IN WHOLE OR IN PART, PROVIDED TO THIRD PARTIES, OR USED FOR ANY PURPOSE OTHER THAN THE PERFORMANCE OF WORK FOR STAIRMASTER, WITHOUT WRITTEN AUTHORIZATION. ALL RIGHTS ARE RESERVED INCLUDING COPYRIGHTS.</small>	
SIZE D	MODEL 510/612	DWG NO. 035602	REV X
DRAWING RELEASE STATUS		SCALE 1/4	SOURCE PRD
		SHEET 5 OF 9	

DWG 035602 SH 5 REV X



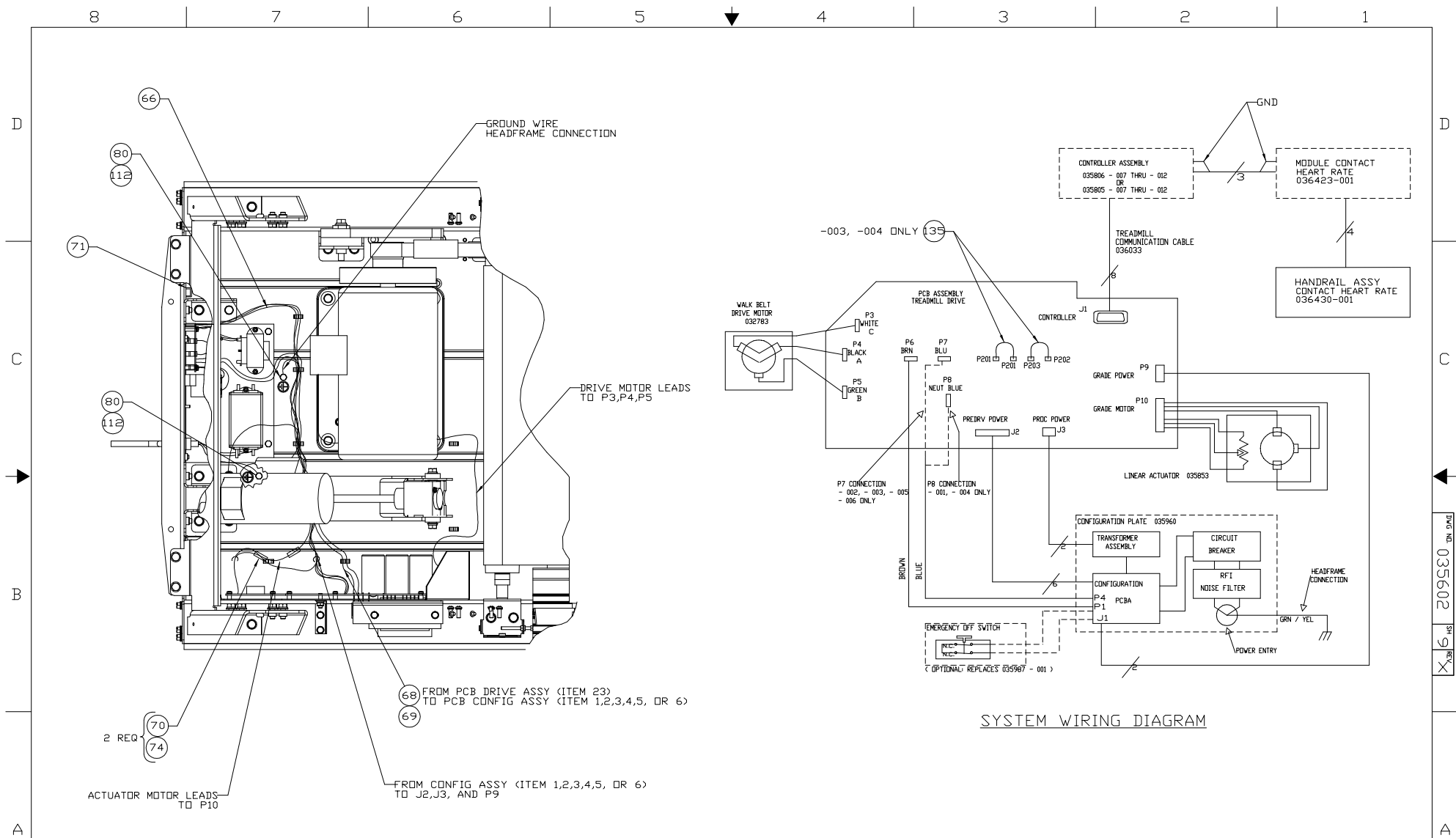
DETAIL D 2 PLACES
SCALE 1/2

DETAIL L
SCALE 1/2
134 INSTALLED UNDER ITEM 65

VIEW A-A

PRODUCTION DRAWING RELEASE STATUS		CONFIDENTIAL & PROPRIETARY <small>THIS DOCUMENT IS THE PROPERTY OF STARMASTER® SPORTS/MEDICAL PRODUCTS, INC. IT MAY NOT BE REPRODUCED IN WHOLE OR IN PART, PROVIDED TO THIRD PARTIES, OR USED FOR ANY PURPOSE OTHER THAN THE PERFORMANCE OF WORK FOR STARMASTER, WITHOUT WRITTEN AUTHORIZATION. ALL RIGHTS ARE RESERVED INCLUDING COPYRIGHTS.</small>			SIZE D	MODEL 510/612	DWG NO. 035602	REV X
		SCALE 1/4	SOURCE PRD	SHEET 7 of 9				

DWG NO. 035602
 1/4 X 11



VIEW M-M (ROTATED 90° CW) 7C
 WIRE ROUTING DETAIL
 SOME COMPONENTS OMITTED FOR CLARITY

SYSTEM WIRING DIAGRAM

PRODUCTION	CONFIDENTIAL & PROPRIETARY THIS DOCUMENT IS THE PROPERTY OF STARMASTER® SPORTS/MEDICAL PRODUCTS, INC. IT MAY NOT BE REPRODUCED IN WHOLE OR IN PART, PROVIDED TO THIRD PARTIES, OR USED FOR ANY PURPOSE OTHER THAN THE PERFORMANCE OF WORK FOR STARMASTER, WITHOUT WRITTEN AUTHORIZATION. ALL RIGHTS ARE RESERVED INCLUDING COPYRIGHTS.			SIZE D	MODEL 510/612	DWG NO. 035602	REV X
	DRAWING RELEASE STATUS	SCALE 1/4	SOURCE PRO	SHEET 9	OF 9		

DWG NO. 035602

	510	1-10 MPH	0-12% GRADE
PART #	PART DESCRIPTION		
32387-001	BELT, DRIVE, POLY-V, 180J10		
33509-003	BELT, WALKING 510, LENGTH 120 1/2		
35901-049	BOLT, M8, GRADE NUT BLOCK		
36093-059	BOLT, ADJUSTMENT M8X90, BELT TENSION		
10820-007	BOLT, PIVOT, GRADE ACTUATOR,		
10820-207	BOLT, TENSIONER		
35901-048	BOLT, UPRIGHT, M8X20		
36093-048	BOLT, UPRIGHT, M8X20, BLACK		
36792-001	BUMPER, RUBBER, 1.5X5.3X1.8 (FOR 36118-003 VSD BOARD)		
36131-001	BUSHING, GRADE ARM		
35972-001	BUSHING, PIVOT, GRADE ACTUATOR,		
36033-001	CABLE, COMMUNICATION		
36156-001	CAP, PLASTIC, GRADE ACTUATOR		
35803-003	CASTING, CONTROLLER , RH		
35803-004	CASTING, CONTROLLER, LH		
31396-022	CIRCUIT BREAKER, 10A, 220V		
31396-023	CIRCUIT BREAKER, 20A, 115V		
35582-001	CLIP, FRONT ROLLER		
36126-001	CONFIGURATION PLATE, DOMESTIC 115 VOLT		
36126-002	CONFIGURATION PLATE, DOMESTIC 230 VOLT		
36126-003	CONFIGURATION PLATE, INTERNATIONAL, 230 VOLT		
36270-001	CONTROLLER, COMPLETE W/ CHR ENGLISH		
36270-002	CONTROLLER, COMPLETE W/ CHR GERMAN		
36270-003	CONTROLLER, COMPLETE W/ CHR SPANISH		
36127-001	CONTROLLER, COMPLETE, NO CHR ENGLISH		
36127-002	CONTROLLER, COMPLETE, NO CHR, GERMAN		
36127-003	CONTROLLER, COMPLETE, NO CHR, SPANISH		
36127-004	CONTROLLER, COMPLETE, NO CHR, FRENCH		
36127-005	CONTROLLER, COMPLETE, NO CHR, ITALIAN		
36127-006	CONTROLLER, COMPLETE, NO CHR, JAPANESE		
35606-001	COVER SIDE RAIL 510		
19921-001	COVER, HANDRAIL, FRONT		
30204-002	DECK 510		
35610-004	END CAP, REAR, LH		
35610-003	END CAP, REAR, RH		
36154-001	FELT PAD, UNDER SIDE RAIL COVERS		
36121-001	FIRMWARE, U8		
35314-001	FLYWHEEL ASSY		
14639-001	FOOT, REAR		
35774-001	FUSE BOARD 110 VOLT 510		
35782-001	FUSE BOARD 230 VOLT 510		
14839-025	FUSE, 0.4A SLOW BLOW F3,F4		
14839-027	FUSE, 0.4A ULTRA SLOW BLOW F3, F4 W/ 36500 XFMR		
14839-012	FUSE, 1.6A SLOW BLOW F2		
14839-006	FUSE, 2.0A SLOW BLOW F2		
14839-007	FUSE, 2.5A SLOW BLOW F1		
36187-001	GRADE ACTUATOR 110 V		
36187-002	GRADE ACTUATOR 220 V		
35730-001	GRADE ARM WELDMENT		
35976-001	GRADE NUT BLOCK		

36062-001	GUARD, FOOT, REAR
40028-00X	GUIDE, WIRE >715/2001
19920-001	HANDRAIL ASSY NO CHR
36430-001	HANDRAIL WITH CHR
35614-001	HOOD <7/1/01
35614-004	HOOD, SPARES GRAY
35614-004	HOOD, SPARES GRAY
36125-001	KIT, GRADE WHEEL
34331-001	KIT, POLAR BELT
36123-001	KIT, SPARE HARDWARE
35420-001	KIT, TENSIONER REPAIR
36500-001	KIT, TRANSFORMER UPGRADE, 230 VOLT
33511-002	KIT, TRIPLE FLEX, MAINTENANCE
36516-002	LABEL, BACK OF CONTROLLER , STAIRMASTER
36516-001	LABEL, STAIRMASTER, UPRIGHT
36517-001	LABEL,510, STAIRMASTER
35609-001	LEG WELDMENT REAR
36071-001	MAGNETIC KEY
36423-001	MODULE, POLAR, CHR
32783-004	MOTOR, DRIVE, 2HP 3 PHASE
35985-001	MULTICOLORED CABLE
36271-001	PAD, HOOD
34331-001	POLAR BELT/ STRAP (OPTIONAL)
36423-001	POLAR CHR INTERFACE PCB
30736-022	POWER CORD, AUSTRALIAN-C19, 220 VOLT
30610-004	POWER CORD, ENGLISH-FLYING LEAD , 115 VOLT
30736-015	POWER CORD, GERMAN, FRENCH, SPANISH , 220 VOLT
30736-013	POWER CORD, ITALIAN, 220 VOLT
30736-042	POWER CORD, JAPANESE , 220 VOLT, 12 FOOT
30610-004	POWER CORD, JAPANESE-FLYING LEAD , 110 VOLT
30736-012	POWER CORD, UK, 220 VOLT
30736-024	POWER CORD, USA, 115 VOLT, NEMA 5-20 TO C19
30736-042	POWER CORD, USA, 220 VOLT, NEMA 6-15 TO C19, 12 FOOT
35808-001	REAR PANEL, CONTROLLER
35943-001	RETAINER, HANDRAIL,
35943-002	RETAINER, HANDRAIL, CHR
33507-004	ROLLER ASSY FRONT
33508-003	ROLLER ASSY REAR (M8 THREADS IN SHAFT)
36496-024	SCREW, CONTROLLER BACK, M4X8 BUTTON HEAD
36496-036	SCREW, CONTROLLER BACK, M5X8 BUTTON HEAD
35901-038	SCREW, DECK, M6X35
35901-044	SCREW, DECK, REAR, M6X70
36128-043	SCREW, HOOD, SIDE, M6, BUTTON HEAD
35901-033	SCREW, M6X12
36166-044	SET SCREW M6 FOR NON CONTRACT HANDRAIL
36147-001	SIDE HANDRAIL, LEFT
36147-002	SIDE HANDRAIL, RIGHT
35607-001	SIDE RAIL, LH 510
35608-001	SIDE RAIL, RH 510
32784-001	TENSIONER ASSY
35612-001	TENSIONER BRACKET
36034-001	TRANSFORMER, 115 VOLT

36134-001	TRIM COVER, 1/4 TURN FASTENER
35959-002	TRIM COVER, FRONT
36178-001	TRIM COVER, RECEPTACLE, SNAP FIT, 1/4 TURN
36133-001	TRIM COVER, RETAINER, 1/4 TURN FASTENER
35603-008	UPRIGHT SUPPORT, LH
35603-009	UPRIGHT SUPPORT, RH
35623-001	UPRIGHT, LH
35622-001	UPRIGHT, RH
36118-002	VSD CARD CAGE
36118-B02	VSD CARD CAGE, FACTORY REPAIRED
36094-006	WASHER, HOOD, SIDE
35920-006	WASHER, FLAT, DECK BOLT
35980-006	WASHER, LOCK
36094-007	WASHER, LOCK, BLACK
35920-007	WASHER, UPRIGHT, M8
36092-006	WASHER, UPRIGHT, M8, BLACK

	510 PLUS	1-10 MPH	0-12% GRADE
PART #	PART DESCRIPTION		
32387-001	BELT, DRIVE, POLY-V, 180J10		
33509-003	BELT, WALKING 510, LENGTH 120 1/2		
35901-049	BOLT, M8, GRADE NUT BLOCK		
36093-059	BOLT, ADJUSTMENT M8X90, BELT TENSION		
10820-007	BOLT, PIVOT, GRADE ACTUATOR,		
10820-207	BOLT, TENSIONER		
35901-048	BOLT, UPRIGHT, M8X20		
36093-048	BOLT, UPRIGHT, M8X20, BLACK		
36792-001	BUMPER, RUBBER, 1.5X5.3X1.8 (FOR 36118-003 VSD BOARD)		
36131-001	BUSHING, GRADE ARM		
35972-001	BUSHING, PIVOT, GRADE ACTUATOR,		
30633-001	CABLE, COMMUNICATION		
36156-001	CAP, PLASTIC, GRADE ACTUATOR		
35803-003	CASTING, CONTROLLER, RH		
35803-004	CASTING, CONTROLLER, LH		
31396-022	CIRCUIT BREAKER, 10A, 220V		
31396-023	CIRCUIT BREAKER, 20A, 115V		
35582-001	CLIP, FRONT ROLLER		
36126-001	CONFIGURATION PLATE, DOMESTIC 115 VOLT		
36126-002	CONFIGURATION PLATE, DOMESTIC 230 VOLT		
36126-003	CONFIGURATION PLATE, INTERNATIONAL, 230 VOLT		
36270-007	CONTROLLER, COMPLETE W/ CHR ENGLISH		
36270-008	CONTROLLER, COMPLETE W/ CHR GERMAN		
36270-009	CONTROLLER, COMPLETE W/ CHR SPANISH		
36127-007	CONTROLLER, COMPLETE, NO CHR ENGLISH		
36127-008	CONTROLLER, COMPLETE, NO CHR, GERMAN		
36127-009	CONTROLLER, COMPLETE, NO CHR, SPANISH		
36127-010	CONTROLLER, COMPLETE, NO CHR, FRENCH		
36127-011	CONTROLLER, COMPLETE, NO CHR, ITALIAN		
36127-012	CONTROLLER, COMPLETE, NO CHR, JAPANESE		
35606-001	COVER SIDE RAIL 510		
19921-001	COVER, HANDRAIL, FRONT		
30204-002	DECK 510		
35259-002	DISPLAY LCD		
35610-004	END CAP, REAR, LH		
35610-003	END CAP, REAR, RH		
36154-002	FELT PAD, UNDER SIDE RAIL COVERS		
36121-001	FIRMWARE, U8		
35314-001	FLYWHEEL ASSY		
14639-001	FOOT, REAR		
35774-001	FUSE BOARD 110 VOLT 510+		
35782-001	FUSE BOARD 230 VOLT 510+		
14839-025	FUSE, 0.4A SLOW BLOW F3,F4		
14839-027	FUSE, 0.4A ULTRA SLOW BLOW F3, F4 W/ 36500 XFMR		
14839-012	FUSE, 1.6A SLOW BLOW F2		
14839-006	FUSE, 2.0A SLOW BLOW F2		
14839-007	FUSE, 2.5A SLOW BLOW F1		
36187-001	GRADE ACTUATOR 110 V		
36187-002	GRADE ACTUATOR 220 V		
35730-001	GRADE ARM WELDMENT		

35976-001	GRADE NUT BLOCK
36062-001	GUARD, FOOT, REAR
19920-001	HANDRAIL ASSY NO CHR
36430-001	HANDRAIL WITH CHR
35614-001	HOOD <7/1/01
35614-004	HOOD, SPARES GRAY
35614-004	HOOD, SPARES GRAY
36125-001	KIT, GRADE WHEEL
34331-001	KIT, POLAR BELT (OPTIONAL)
36123-001	KIT, SPARE HARDWARE
35420-001	KIT, TENSIONER REPAIR
36500-001	KIT, TRANSFORMER UPGRADE, 230 VOLT
33511-002	KIT, TRIPLE FLEX, MAINTENANCE
36516-002	LABEL, BACK OF CONTROLLER , STAIRMASTER
36516-001	LABEL, STAIRMASTER, UPRIGHT
36517-002	LABEL,510 PLUS, STAIRMASTER
35609-001	LEG WELDMENT, REAR
36071-001	MAGNETIC KEY
36423-001	MODULE, POLAR, CHR
32783-004	MOTOR, DRIVE, 2HP 3 PHASE
35985-001	MULTICOLORED CABLE
36271-001	PAD, HOOD
34331-001	POLAR BELT/ STRAP (OPTIONAL)
36423-001	POLAR CHR INTERFACE PCB
30736-022	POWER CORD, AUSTRALIAN-C19, 220 VOLT
30610-004	POWER CORD, ENGLISH-FLYING LEAD , 115 VOLT
30736-015	POWER CORD, GERMAN, FRENCH, SPANISH , 220 VOLT
30736-013	POWER CORD, ITALIAN, 220 VOLT
30736-042	POWER CORD, JAPANESE , 220 VOLT, 12 FOOT
30610-004	POWER CORD, JAPANESE-FLYING LEAD , 110 VOLT
30736-012	POWER CORD, UK, 220 VOLT
30736-024	POWER CORD, USA, 115 VOLT, NEMA 5-20 TO C19
30736-042	POWER CORD, USA, 220 VOLT, NEMA 6-15 TO C19, 12 FOOT
35808-001	REAR PANEL, CONTROLLER
35943-001	RETAINER, HANDRAIL,
35943-002	RETAINER, HANDRAIL, CHR
33507-004	ROLLER ASSY FRONT
33508-003	ROLLER ASSY REAR (M8 THREADS IN SHAFT)
36496-024	SCREW, CONTROLLER BACK, M4X8 BUTTON HEAD
36496-036	SCREW, CONTROLLER BACK, M5X8 BUTTON HEAD
35901-038	SCREW, DECK, M6X35
35901-044	SCREW, DECK, REAR, M6X70
36128-043	SCREW, HOOD, SIDE M6, BUTTON HEAD
35901-033	SCREW, M6X12
36166-044	SET SCREW M6 FOR NON CONTRACT HANDRAIL
36147-001	SIDE HANDRAIL, LEFT
36147-002	SIDE HANDRAIL, RIGHT
35607-001	SIDE RAIL, LH 510
35608-001	SIDE RAIL, RH 510
32784-001	TENSIONER ASSY
35612-001	TENSIONER BRACKET
36034-001	TRANSFORMER, 115 VOLT

36134-001	TRIM COVER, 1/4 TURN FASTENER
35959-002	TRIM COVER, FRONT
36178-001	TRIM COVER, RECEPTACLE, SNAP FIT, 1/4 TURN
36133-001	TRIM COVER, RETAINER, 1/4 TURN FASTENER
35603-008	UPRIGHT SUPPORT, LH
35603-009	UPRIGHT SUPPORT, RH
35623-001	UPRIGHT, LH
35622-001	UPRIGHT, RH
36118-002	VSD CARD CAGE
36118-B02	VSD CARD CAGE, FACTORY REPAIRED
36094-006	WASHER, HOOD, SIDE
35920-006	WASHER, FLAT, DECK BOLT
35980-006	WASHER, LOCK
36094-007	WASHER, LOCK, BLACK
35920-007	WASHER, UPRIGHT, M8
36092-006	WASHER, UPRIGHT, M8, BLACK

612 1-12 MPH 0-15% GRADE

PART #	PART DESCRIPTION
32387-001	BELT, DRIVE, POLY-V, 180J10
33509-004	BELT, WALKING 612, LENGTH 130 1/2
35901-049	BOLT, M8, GRADE NUT BLOCK
36093-059	BOLT, ADJUSTMENT M8X90, BELT TENSION
10820-007	BOLT, PIVOT, GRADE ACTUATOR,
10820-207	BOLT, TENSIONER
35901-048	BOLT, UPRIGHT, M8X20
36093-048	BOLT, UPRIGHT, M8X20, BLACK
36792-001	BUMPER, RUBBER, 1.5X5.3X1.8 (FOR 36118-003 VSD BOARD)
36131-001	BUSHING, GRADE ARM
35972-001	BUSHING, PIVOT, GRADE ACTUATOR,
36033-001	CABLE, COMMUNICATION
36156-001	CAP, PLASTIC, GRADE ACTUATOR
35803-003	CASTING, CONTROLLER, RH
35803-004	CASTING, CONTROLLER, LH
31396-022	CIRCUIT BREAKER, 10A, 220V
31396-023	CIRCUIT BREAKER, 20A, 115V
35582-001	CLIP, FRONT ROLLER
36126-004	CONFIGURATION PLATE, DOMESTIC 115 VOLT
36126-005	CONFIGURATION PLATE, DOMESTIC 230 VOLT
36126-006	CONFIGURATION PLATE, INTERNATIONAL, 230 VOLT
36270-001	CONTROLLER, COMPLETE W/ CHR ENGLISH
36270-002	CONTROLLER, COMPLETE W/ CHR GERMAN
36270-003	CONTROLLER, COMPLETE W/ CHR SPANISH
36127-001	CONTROLLER, COMPLETE, NO CHR ENGLISH
36127-002	CONTROLLER, COMPLETE, NO CHR, GERMAN
36127-003	CONTROLLER, COMPLETE, NO CHR, SPANISH
36127-004	CONTROLLER, COMPLETE, NO CHR, FRENCH
36127-005	CONTROLLER, COMPLETE, NO CHR, ITALIAN
36127-006	CONTROLLER, COMPLETE, NO CHR, JAPANESE
35606-002	COVER SIDE RAIL 612
19921-001	COVER, HANDRAIL, FRONT
30204-003	DECK 612
35610-004	END CAP, REAR, LH
35610-003	END CAP, REAR, RH
36154-001	FELT PAD, UNDER SIDE RAIL COVERS
36121-001	FIRMWARE, U8
35314-001	FLYWHEEL ASSY
14639-001	FOOT, REAR
35774-002	FUSE BOARD 110 VOLT 612
35782-002	FUSE BOARD 230 VOLT 612
14839-025	FUSE, 0.4A SLOW BLOW F3,F4
14839-027	FUSE, 0.4A ULTRA SLOW BLOW F3, F4 W/ 36500 XFMR
14839-012	FUSE, 1.6A SLOW BLOW F2
14839-006	FUSE, 2.0A SLOW BLOW F2
14839-007	FUSE, 2.5A SLOW BLOW F1
36187-001	GRADE ACTUATOR 110 V
36187-002	GRADE ACTUATOR 220 V
35730-001	GRADE ARM WELDMENT
35976-001	GRADE NUT BLOCK

36062-001	GUARD, FOOT, REAR
40028-00X	GUIDE, WIRE >715/2001
19920-001	HANDRAIL ASSY NO CHR
36430-001	HANDRAIL WITH CHR
35614-001	HOOD <7/1/01
35614-004	HOOD, SPARES GRAY
35614-004	HOOD, SPARES GRAY
36125-001	KIT, GRADE WHEEL
34331-001	KIT, POLAR BELT
36123-001	KIT, SPARE HARDWARE
35420-001	KIT, TENSIONER REPAIR
36500-001	KIT, TRANSFORMER UPGRADE, 230 VOLT
33511-002	KIT, TRIPLE FLEX, MAINTENANCE
36516-002	LABEL, BACK OF CONTROLLER , STAIRMASTER
36516-001	LABEL, STAIRMASTER, UPRIGHT
36517-003	LABEL,612, STAIRMASTER
35609-001	LEG WELDMENT REAR
36071-001	MAGNETIC KEY
36423-001	MODULE, POLAR, CHR
32783-004	MOTOR, DRIVE, 2HP 3 PHASE
35985-001	MULTICOLORED CABLE
36271-001	PAD, HOOD
34331-001	POLAR BELT/ STRAP (OPTIONAL)
36423-001	POLAR CHR INTERFACE PCB
30736-022	POWER CORD, AUSTRALIAN-C19, 220 VOLT
30610-004	POWER CORD, ENGLISH-FLYING LEAD , 115 VOLT
30736-015	POWER CORD, GERMAN, FRENCH, SPANISH , 220 VOLT
30736-013	POWER CORD, ITALIAN, 220 VOLT
30736-042	POWER CORD, JAPANESE , 220 VOLT, 12 FOOT
30610-004	POWER CORD, JAPANESE-FLYING LEAD , 110 VOLT
30736-012	POWER CORD, UK, 220 VOLT
30736-024	POWER CORD, USA, 115 VOLT, NEMA 5-20 TO C19
30736-042	POWER CORD, USA, 220 VOLT, NEMA 6-15 TO C19, 12 FOOT
35808-001	REAR PANEL, CONTROLLER
35943-001	RETAINER, HANDRAIL,
35943-002	RETAINER, HANDRAIL, CHR
33507-004	ROLLER ASSY FRONT
33508-003	ROLLER ASSY REAR (M8 THREADS IN SHAFT)
36496-024	SCREW, CONTROLLER BACK, M4X8 BUTTON HEAD
36496-036	SCREW, CONTROLLER BACK, M5X8 BUTTON HEAD
35901-038	SCREW, DECK, M6X35
35901-044	SCREW, DECK, REAR, M6X70
36128-043	SCREW, HOOD, SIDE M6, BUTTON HEAD
35901-033	SCREW, M6X12
36166-044	SET SCREW M6 FOR NON CONTRACT HANDRAIL
36147-001	SIDE HANDRAIL, LEFT
36147-002	SIDE HANDRAIL, RIGHT
35607-002	SIDE RAIL, LH 510
35608-002	SIDE RAIL, RH 510
32784-001	TENSIONER ASSY
35612-001	TENSIONER BRACKET
36034-001	TRANSFORMER, 115 VOLT

36134-001	TRIM COVER, 1/4 TURN FASTENER
35959-002	TRIM COVER, FRONT
36178-001	TRIM COVER, RECEPTACLE, SNAP FIT, 1/4 TURN
36133-001	TRIM COVER, RETAINER, 1/4 TURN FASTENER
35603-008	UPRIGHT SUPPORT, LH
35603-009	UPRIGHT SUPPORT, RH
35623-001	UPRIGHT, LH
35622-001	UPRIGHT, RH
36118-002	VSD CARD CAGE
36118-B02	VSD CARD CAGE, FACTORY REPAIRED
36094-006	WASHER, HOOD, SIDE
35920-006	WASHER, FLAT, DECK BOLT
35980-006	WASHER, LOCK
36094-007	WASHER, LOCK, BLACK
35920-007	WASHER, UPRIGHT, M8
36092-006	WASHER, UPRIGHT, M8, BLACK

	612 PLUS	1-12 MPH	0-15% GRADE
PART #	PART DESCRIPTION		
32387-001	BELT, DRIVE, POLY-V, 180J10		
33509-004	BELT, WALKING 612, LENGTH 130 1/2		
35901-049	BOLT, M8, GRADE NUT BLOCK		
36093-059	BOLT, ADJUSTMENT M8X90, BELT TENSION		
10820-007	BOLT, PIVOT, GRADE ACTUATOR,		
10820-207	BOLT, TENSIONER		
35901-048	BOLT, UPRIGHT, M8X20		
36093-048	BOLT, UPRIGHT, M8X20, BLACK		
36792-001	BUMPER, RUBBER, 1.5X5.3X1.8 (FOR 36118-003 VSD BOARD)		
36131-001	BUSHING, GRADE ARM		
35972-001	BUSHING, PIVOT, GRADE ACTUATOR,		
30633-001	CABLE, COMMUNICATION		
36156-001	CAP, PLASTIC, GRADE ACTUATOR		
35803-003	CASTING, CONTROLLER, RH		
35803-004	CASTING, CONTROLLER, LH		
31396-022	CIRCUIT BREAKER, 10A, 220V		
31396-023	CIRCUIT BREAKER, 20A, 115V		
35582-001	CLIP, FRONT ROLLER		
36126-004	CONFIGURATION PLATE, DOMESTIC 115 VOLT		
36126-005	CONFIGURATION PLATE, DOMESTIC 230 VOLT		
36126-006	CONFIGURATION PLATE, INTERNATIONAL, 230 VOLT		
36270-007	CONTROLLER, COMPLETE W/ CHR ENGLISH		
36270-008	CONTROLLER, COMPLETE W/ CHR GERMAN		
36270-009	CONTROLLER, COMPLETE W/ CHR SPANISH		
36127-007	CONTROLLER, COMPLETE, NO CHR ENGLISH		
36127-008	CONTROLLER, COMPLETE, NO CHR, GERMAN		
36127-009	CONTROLLER, COMPLETE, NO CHR, SPANISH		
36127-010	CONTROLLER, COMPLETE, NO CHR, FRENCH		
36127-011	CONTROLLER, COMPLETE, NO CHR, ITALIAN		
36127-012	CONTROLLER, COMPLETE, NO CHR, JAPANESE		
35606-002	COVER SIDE RAIL 612		
19921-001	COVER, HANDRAIL, FRONT		
30204-003	DECK 612		
35259-002	DISPLAY LCD		
35610-004	END CAP, REAR, LH		
35610-003	END CAP, REAR, RH		
36154-002	FELT PAD, UNDER SIDE RAIL COVERS		
36121-001	FIRMWARE, U8		
35314-001	FLYWHEEL ASSY		
14639-001	FOOT, REAR		
35774-002	FUSE BOARD 110 VOLT 612+		
35782-002	FUSE BOARD 230 VOLT 612+		
14839-025	FUSE, 0.4A SLOW BLOW F3,F4		
14839-027	FUSE, 0.4A ULTRA SLOW BLOW F3, F4 W/ 36500 XFMR		
14839-012	FUSE, 1.6A SLOW BLOW F2		
14839-006	FUSE, 2.0A SLOW BLOW F2		
14839-007	FUSE, 2.5A SLOW BLOW F1		
36187-001	GRADE ACTUATOR 110 V		
36187-002	GRADE ACTUATOR 220 V		
35730-001	GRADE ARM WELDMENT		

35976-001	GRADE NUT BLOCK
36062-001	GUARD, FOOT, REAR
19920-001	HANDRAIL ASSY NO CHR
36430-001	HANDRAIL WITH CHR
35614-001	HOOD <7/1/01
35614-004	HOOD, SPARES GRAY
35614-004	HOOD, SPARES GRAY
36125-001	KIT, GRADE WHEEL
34331-001	KIT, POLAR BELT (OPTIONAL)
36123-001	KIT, SPARE HARDWARE
35420-001	KIT, TENSIONER REPAIR
36500-001	KIT, TRANSFORMER UPGRADE, 230 VOLT
33511-002	KIT, TRIPLE FLEX, MAINTENANCE
36516-002	LABEL, BACK OF CONTROLLER , STAIRMASTER
36516-001	LABEL, STAIRMASTER, UPRIGHT
36517-004	LABEL,612 PLUS, STAIRMASTER
35609-001	LEG WELDMENT, REAR
36071-001	MAGNETIC KEY
36423-001	MODULE, POLAR, CHR
32783-004	MOTOR, DRIVE, 2HP 3 PHASE
35985-001	MULTICOLORED CABLE
36271-001	PAD, HOOD
34331-001	POLAR BELT/ STRAP (OPTIONAL)
36423-001	POLAR CHR INTERFACE PCB
30736-022	POWER CORD, AUSTRALIAN-C19, 220 VOLT
30610-004	POWER CORD, ENGLISH-FLYING LEAD , 115 VOLT
30736-015	POWER CORD, GERMAN, FRENCH, SPANISH , 220 VOLT
30736-013	POWER CORD, ITALIAN, 220 VOLT
30736-042	POWER CORD, JAPANESE , 220 VOLT, 12 FOOT
30610-004	POWER CORD, JAPANESE-FLYING LEAD , 110 VOLT
30736-012	POWER CORD, UK, 220 VOLT
30736-024	POWER CORD, USA, 115 VOLT, NEMA 5-20 TO C19
30736-042	POWER CORD, USA, 220 VOLT, NEMA 6-15 TO C19,12 FOOT
35808-001	REAR PANEL, CONTROLLER
35943-001	RETAINER, HANDRAIL,
35943-002	RETAINER, HANDRAIL, CHR
33507-004	ROLLER ASSY FRONT
33508-003	ROLLER ASSY REAR (M8 THREADS IN SHAFT)
36496-024	SCREW, CONTROLLER BACK, M4X8 BUTTON HEAD
36496-036	SCREW, CONTROLLER BACK, M5X8 BUTTON HEAD
35901-038	SCREW, DECK, M6X35
35901-044	SCREW, DECK, REAR, M6X70
36128-043	SCREW, HOOD, SIDE M6, BUTTON HEAD
35901-033	SCREW, M6X12
36166-044	SET SCREW M6 FOR NON CONTRACT HANDRAIL
36147-001	SIDE HANDRAIL, LEFT
36147-002	SIDE HANDRAIL, RIGHT
35607-002	SIDE RAIL, LH 510
35608-002	SIDE RAIL, RH 510
32784-001	TENSIONER ASSY
35612-001	TENSIONER BRACKET
36034-001	TRANSFORMER, 115 VOLT

36134-001	TRIM COVER, 1/4 TURN FASTENER
35959-002	TRIM COVER, FRONT
36178-001	TRIM COVER, RECEPTACLE, SNAP FIT, 1/4 TURN
36133-001	TRIM COVER, RETAINER, 1/4 TURN FASTENER
35603-008	UPRIGHT SUPPORT, LH
35603-009	UPRIGHT SUPPORT, RH
35623-001	UPRIGHT, LH
35622-001	UPRIGHT, RH
36118-002	VSD CARD CAGE
36118-B02	VSD CARD CAGE, FACTORY REPAIRED
36094-006	WASHER, HOOD, SIDE
35920-006	WASHER, FLAT, DECK BOLT
35980-006	WASHER, LOCK
36094-007	WASHER, LOCK, BLACK
35920-007	WASHER, UPRIGHT, M8
36092-006	WASHER, UPRIGHT, M8, BLACK